

U.S. Department of
Homeland Security

United States
Coast Guard



LIGHT LIST

Volume II

ATLANTIC COAST

Shrewsbury River, New Jersey to Little River, South Carolina

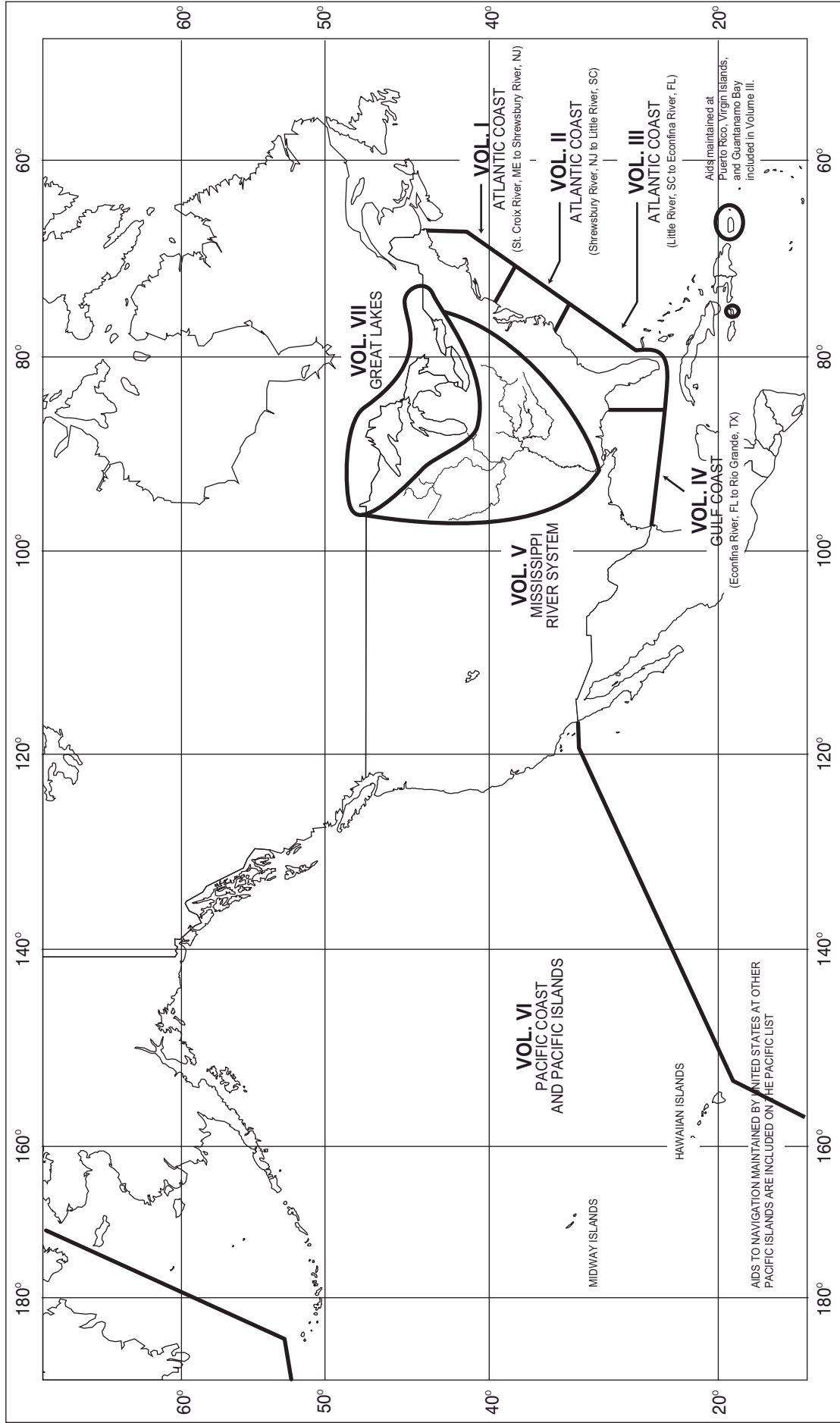
This Light List contains a list of lights, sound signals, buoys, daybeacons, and other aids to navigation.

IMPORTANT
THIS LIGHT LIST SHOULD BE CORRECTED
EACH WEEK FROM THE LOCAL NOTICES TO MARINERS
OR NOTICES TO MARINERS AS APPROPRIATE.

2017

COMDTPUB P16502.2

LIMITS OF LIGHT LISTS PUBLISHED BY
U.S. COAST GUARD





U.S. AIDS TO NAVIGATION SYSTEM

on navigable waters except Western Rivers

LATERAL SYSTEM AS SEEN ENTERING FROM SEAWARD

<p>PORT SIDE ODD NUMBERED AIDS</p> <p>GREEN LIGHT ONLY FLASHING (2) FLASHING OCCULTING QUICK FLASHING ISO</p>	<p>PREFERRED CHANNEL NO NUMBERS - MAY BE LETTERED</p> <p>PREFERRED CHANNEL TO STARBOARD TOPMOST BAND GREEN</p> <p>GREEN LIGHT ONLY</p> <p>COMPOSITE GROUP FLASHING (2+1)</p>	<p>PREFERRED CHANNEL NO NUMBERS - MAY BE LETTERED</p> <p>PREFERRED CHANNEL TO PORT TOPMOST BAND RED</p> <p>RED LIGHT ONLY</p> <p>COMPOSITE GROUP FLASHING (2+1)</p>	<p>STARBOARD SIDE EVEN NUMBERED AIDS</p> <p>RED LIGHT ONLY FLASHING (2) FLASHING OCCULTING QUICK FLASHING ISO</p>
---	--	---	---

AIDS TO NAVIGATION HAVING NO LATERAL SIGNIFICANCE

<p>ISOLATED DANGER NO NUMBERS - MAY BE LETTERED</p> <p>WHITE LIGHT ONLY</p> <p>FI (2) 5s</p>	<p>SAFE WATER NO NUMBERS - MAY BE LETTERED</p> <p>WHITE LIGHT ONLY MORSE CODE</p> <p>Mo (A)</p>
<p>RANGE DAYBOARDS MAY BE LETTERED</p>	
<p>DAYBOARDS - MAY BE LETTERED</p> <p>WHITE LIGHT ONLY</p>	<p>SPECIAL MARKS - MAY BE LETTERED</p> <p>YELLOW LIGHT ONLY FIXED FLASHING</p> <p>SHAPE OPTIONAL—BUT SELECTED TO BE APPROPRIATE FOR THE POSITION OF THE MARK IN RELATION TO THE NAVIGABLE WATERWAY AND THE DIRECTION OF BUOYAGE.</p>

Aids to Navigation marking the Intracoastal Waterway (ICW) display unique yellow symbols to distinguish them from aids marking other waters. Yellow triangles indicate aids should be passed by keeping them on the starboard (right) hand of the vessel. Yellow squares indicate aids should be passed by keeping them on the port (left) hand of the vessel. A yellow horizontal band provides no lateral information, but simply identifies aids as marking the ICW.

TYPICAL INFORMATION AND REGULATORY MARKS

INFORMATION AND REGULATORY MARKERS

WHEN LIGHTED, INFORMATION AND REGULATORY MARKS MAY DISPLAY ANY WHITE LIGHT RHYTHM EXCEPT QUICK FLASHING, Mo(A), AND FLASHING (2)

EXPLANATION MAY BE PLACED OUTSIDE THE CROSSED DIAMOND SHAPE, SUCH AS DAM, RAPIDS, SWIM AREA, ETC.

THE NATURE OF DANGER MAY BE INDICATED INSIDE THE DIAMOND SHAPE, SUCH AS ROCK, WRECK, SHOAL, DAM, ETC.

TYPE OF CONTROL IS INDICATED IN THE CIRCLE, SUCH AS SLOW, NO WAKE, ANCHORING, ETC.

FOR DISPLAYING INFORMATION SUCH AS DIRECTIONS, DISTANCES, LOCATIONS, ETC.

MAY SHOW WHITE REFLECTOR OR LIGHT

BOAT EXCLUSION AREA

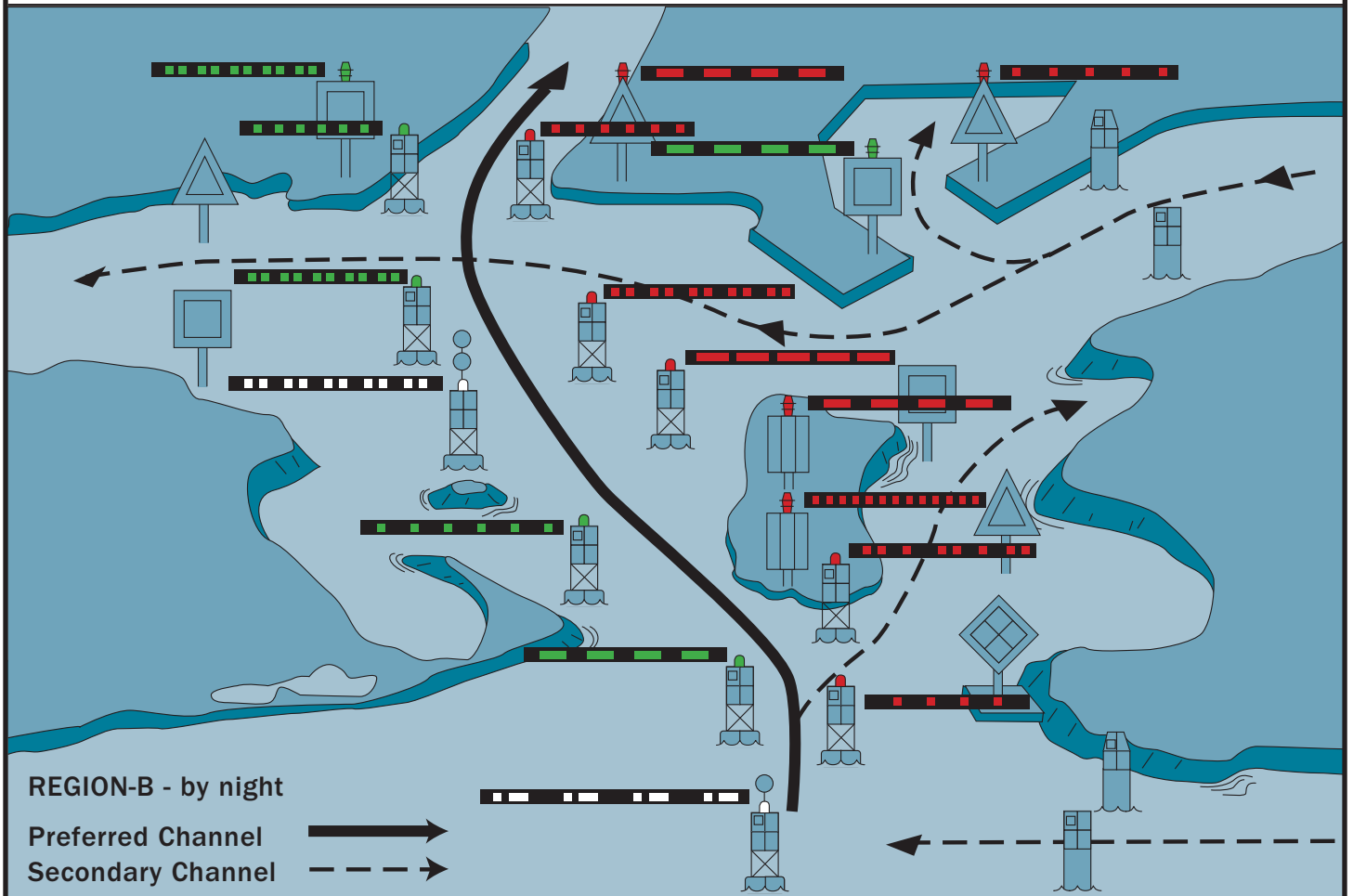
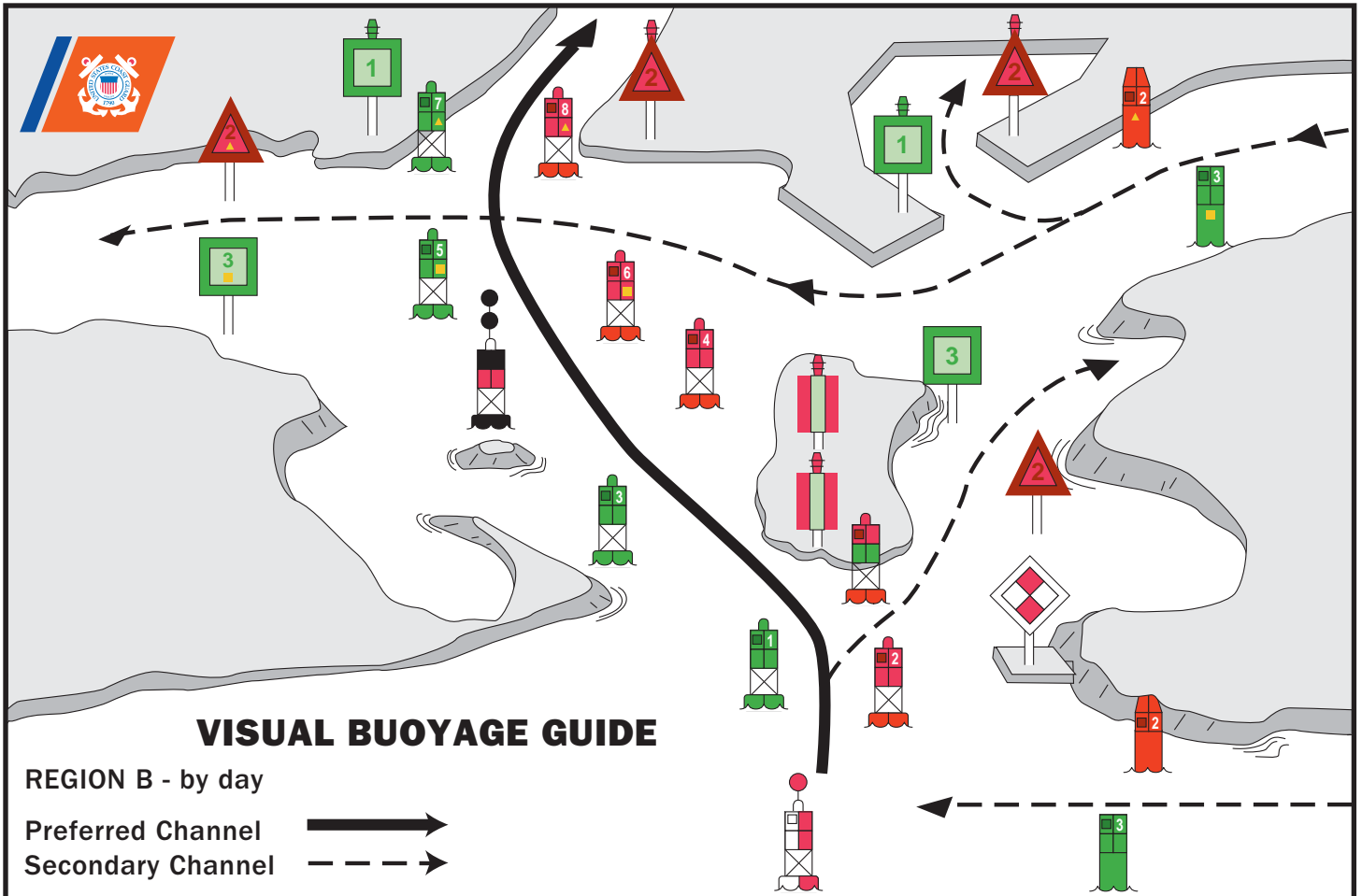
DANGER

CONTROLLED AREA

DANGER

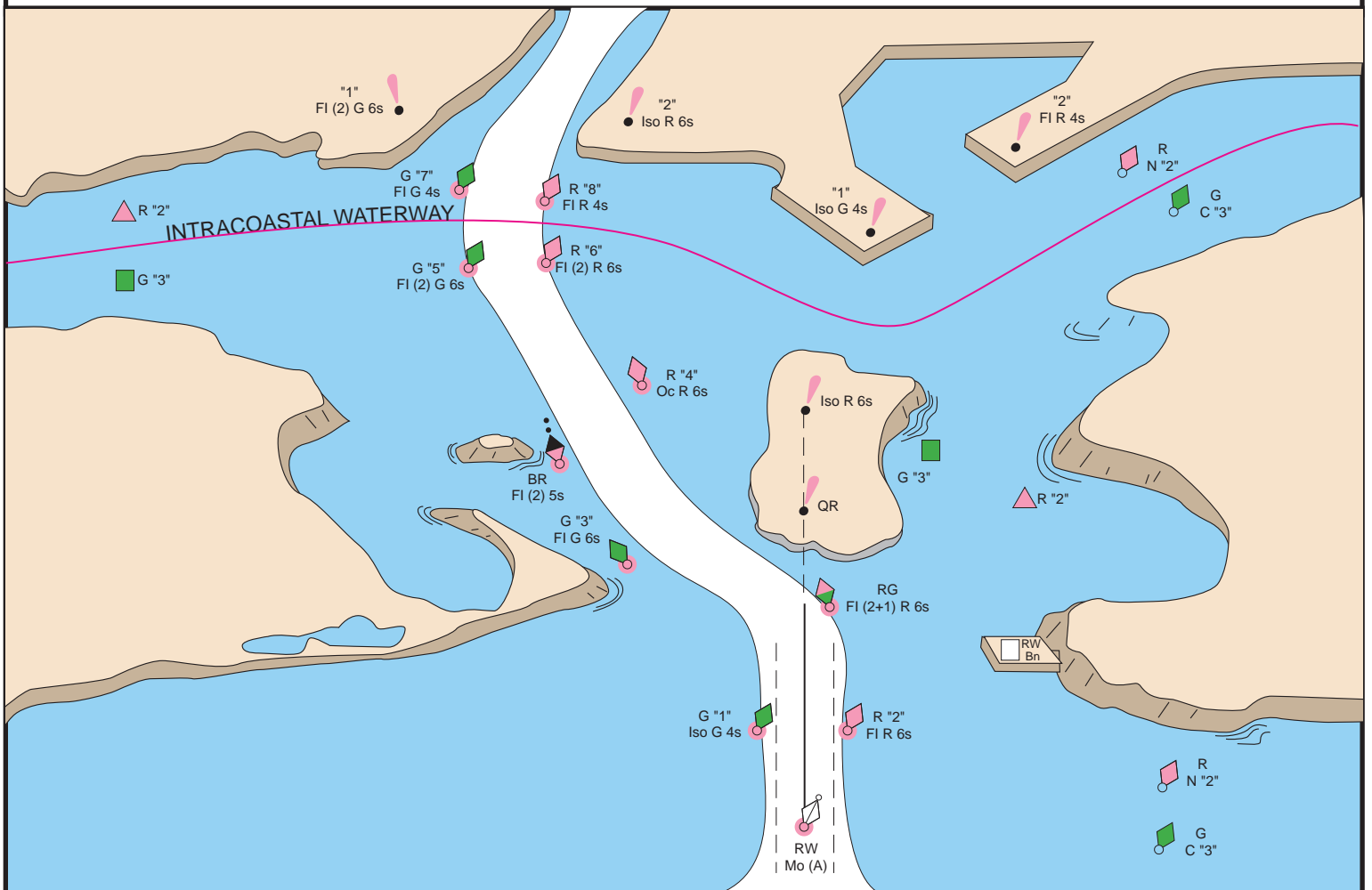
BUOY USED TO DISPLAY REGULATORY MARKERS

MAY SHOW WHITE LIGHT MAY BE LETTERED





FICTITIOUS NAUTICAL CHART





U.S. AIDS TO NAVIGATION SYSTEM

on the Western River System

AS SEEN ENTERING FROM SEAWARD

<p>PORT SIDE OR RIGHT DESCENDING BANK</p> <p>GREEN OR WHITE LIGHTS</p> <p>FLASHING ISO</p> <p>LIGHT LIGHTED BUOY CAN</p> <p>SG CNG</p> <p>PASSING DAYBEACON CROSSING DAYBEACON</p> <p>176.9 MILE BOARD</p>	<p>PREFERRED CHANNEL MARK JUNCTIONS AND OBSTRUCTIONS COMPOSITE GROUP FLASHING (2+1)</p> <p>PREFERRED CHANNEL TO STARBOARD TOPMOST BAND GREEN FI (2+1) G</p> <p>JG</p> <p>PREFERRED CHANNEL TO PORT TOPMOST BAND RED FI (2+1) R</p> <p>JR</p> <p>DAYBOARDS HAVING NO LATERAL SIGNIFICANCE</p> <p>MAY BE LETTERED</p> <p>WHITE LIGHT ONLY</p> <p>NB</p> <p>A</p>	<p>STARBOARD SIDE OR LEFT DESCENDING BANK</p> <p>RED OR WHITE LIGHTS</p> <p>FLASHING (2) ISO</p> <p>LIGHT LIGHTED BUOY NUN</p> <p>TR CNR</p> <p>PASSING DAYBEACON CROSSING DAYBEACON</p> <p>123.5 MILE BOARD</p>
---	--	---

SPECIAL MARKS--MAY BE LETTERED

UNLIGHTED LIGHTED

NY

SHAPE: OPTIONAL--BUT SELECTED TO BE APPROPRIATE FOR THE POSITION OF THE MARK IN RELATION TO THE NAVIGABLE WATERWAY AND THE DIRECTION OF BUOYAGE.

YELLOW LIGHT ONLY
FIXED FLASHING

MOORING BUOY
WHITE WITH BLUE BAND
MAY SHOW WHITE REFLECTOR OR LIGHT

TYPICAL INFORMATION AND REGULATORY MARKS

INFORMATION AND REGULATORY MARKERS

WHEN LIGHTED, INFORMATION AND REGULATORY MARKS MAY DISPLAY ANY LIGHT RHYTHM EXCEPT QUICK FLASHING, Mo(a) AND FLASHING (2)

NW WHITE LIGHT ONLY

SWIM AREA BOAT EXCLUSION AREA DANGER DANGER CONTROLLED AREA

EXPLANATION MAY BE PLACED OUTSIDE THE CROSSED DIAMOND SHAPE, SUCH AS DAM, RAPIDS, SWIM AREA, ETC.

THE NATURE OF DANGER MAY BE INDICATED INSIDE THE DIAMOND SHAPE, SUCH AS ROCK, WRECK, SHOAL, DAM, ETC.

TYPE OF CONTROL IS INDICATED IN THE CIRCLE, SUCH AS SLOW, NO WAKE, ANCHORING, ETC.

INFORMATION

FOR DISPLAYING INFORMATION SUCH AS DIRECTIONS, DISTANCES, LOCATIONS, ETC.

BUOY USED TO DISPLAY REGULATORY MARKERS

MAY SHOW WHITE LIGHT
MAY BE LETTERED

STATE WATERS

INLAND (STATE) WATERS OBSTRUCTION MARK
MAY SHOW WHITE REFLECTOR OR QUICK FLASHING WHITE LIGHT

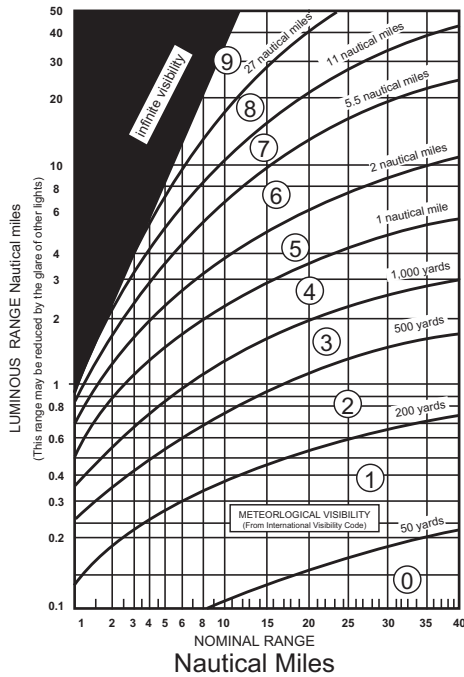
BLACK-STRIPED WHITE BUOY

Used to indicate an obstruction to navigation, extends from the nearest shore to the buoy. This means "do not pass between the buoy and the nearest shore." This aid is replacing the red and white striped buoy within the USWMS, but cannot be used until all red and white striped buoys on a waterway have been replaced.

LUMINOUS RANGE DIAGRAM

The nominal range given in this Light List is the maximum distance a given light can be seen when the meteorological visibility is 10 nautical miles. If the existing visibility is less than 10 NM, the range at which the light can be seen will be reduced below its nominal range. And, if the visibility is greater than 10 NM, the light can be seen at greater distances. The distance at which a light may be expected to be seen in the prevailing visibility is called its luminous range.

This diagram enables the mariner to determine the approximate luminous range of a light when the nominal range and the prevailing meteorological visibility are known. The diagram is entered from the bottom border using the nominal range listed in column 6 of this book. The intersection of the nominal range with the appropriate visibility curve (or, more often, a point between two curves) yields, by moving horizontally to the left border, the luminous range.



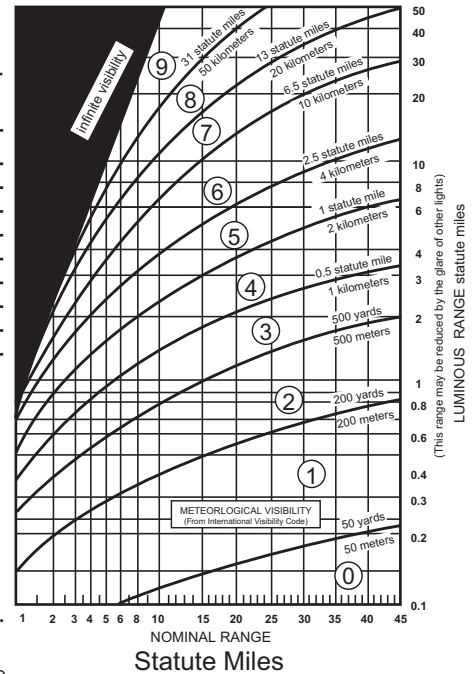
METEOROLOGICAL VISIBILITY (From International Visibility Code)

Code	Metric	Nautical (approximate)
0	less than 50 meters	less than 50 yards
1	50-200 meters	50-200 yards
2	200-500 meters	200-500 yards
3	500-1,000 meters	500-1,000 yards
4	1-2 kilometers	1,000-2,000 yards
5	2-4 kilometers	1-2 nautical miles
6	4-10 kilometers	2-5.5 nautical miles
7	10-20 kilometers	5.5-11 nautical miles
8	20-50 kilometers	11-27 nautical miles
9	greater than 50 km	greater than 27 nm

CAUTION

When using this diagram it must be remembered that:

1. The ranges obtained are approximate.
2. The transparency of the atmosphere may vary between observer and light.
3. Glare from background lighting will reduce the range that lights are sighted.
4. The rolling motion of a vessel and/or of a lighted aid may reduce the distance that lights can be detected or identified.



GEOGRAPHIC RANGE TABLE

The following table gives the approximate geographic range of visibility for an object which may be seen by an observer at sea level. It is necessary to add to the distance for the height of any object the distance corresponding to the height of the observer's eye above sea level.

Height Feet / Meters	Distance Nautical Miles (NM)	Height Feet / Meters	Distance Nautical Miles (NM)	Height Feet / Meters	Distance Nautical Miles (NM)
5/1.5	2.6	70/21.3	9.8	250/76.2	18.5
10/3.1	3.7	75/22.9	10.1	300/91.4	20.3
15/4.6	4.5	80/24.4	10.5	350/106.7	21.9
20/6.1	5.2	85/25.9	10.8	400/121.9	23.4
25/7.6	5.9	90/27.4	11.1	450/137.2	24.8
30/9.1	6.4	95/29.0	11.4	500/152.4	26.2
35/10.7	6.9	100/30.5	11.7	550/167.6	27.4
40/12.2	7.4	110/33.5	12.3	600/182.9	28.7
45/13.7	7.8	120/36.6	12.8	650/198.1	29.8
50/15.2	8.3	130/39.6	13.3	700/213.4	31.0
55/16.8	8.7	140/42.7	13.8	800/243.8	33.1
60/18.3	9.1	150/45.7	14.3	900/274.3	35.1
65/19.8	9.4	200/61.0	16.5	1000/304.8	37.0

Example: Determine the geographic visibility of an object, with a height above water of 65 feet, for an observer with a height of eye of 35 feet.

Enter above table;

Height of object 65 feet= 9.4 NM
 Height of observer 35 feet= 6.9 NM
 Computed geographic visibility= 16.3 NM

COAST GUARD DISTRICT COMMANDERS

DISTRICT	ADDRESS	WATERS OF JURISDICTION
FIRST	408 Atlantic Avenue Boston, MA 02110-3350 Tel: (617) 223-8351 http://www.uscg.mil/d1	Maine, New Hampshire, Massachusetts, Vermont (Lake Champlain), Rhode Island, Connecticut, New York, to Shrewsbury River, New Jersey.
FIFTH	Federal Building 431 Crawford Street Portsmouth, VA 23704-5004 Tel: (757) 398-6486 (757) 398-6552 http://www.uscg.mil/d5	Shrewsbury River, New Jersey to Delaware, Maryland, Virginia, District of Columbia, and North Carolina.
SEVENTH	Brickell Plaza Federal Building 909 SE 1st Avenue; Rm:406 Miami, FL 33131-3050 Tel: (305) 415-6752 (305) 415-6800 http://www.uscg.mil/d7	South Carolina, Georgia, Florida to 83°50'W, and Puerto Rico and adjacent islands of the United States.
EIGHTH	Hale Boggs Federal Building 500 Poydras Street New Orleans, LA 70130-3310 Tel: (504) 671-2327 (504) 671-2137 http://www.uscg.mil/d8	Florida westward from 83°50'W, Alabama, Mississippi, Louisiana, Texas, the Mississippi River System except that portion of the Illinois River north of Joliet, Illinois.
NINTH	1240 East 9th Street Cleveland, OH 44199-2060 Tel: (216) 902-6060 (216) 902-6117 http://www.uscg.mil/d9	Great Lakes and St. Lawrence River above St. Regis River.
ELEVENTH	Coast Guard Island Building 50-2 Alameda, CA 94501-5100 Tel: (510) 437-2975 http://www.uscg.mil/d11	California, Nevada, Utah, Arizona.
THIRTEENTH	Federal Building 915 Second Avenue 35th Floor, Rm 3510 Seattle, WA 98174-1067 Tel: (206) 220-7270 (206) 220-7004 http://www.uscg.mil/d13	Oregon, Washington, Idaho, and Montana.
FOURTEENTH	Prince Kalaniana'ole Federal Bldg. 300 Ala Moana Blvd 9th Floor, Room 9-220 Honolulu, HI 96850-4982 Tel: (808) 535-3409 (808) 535-3414 http://www.uscg.mil/d14	Hawaiian, American Samoa, Marshall, Marianas, and Caroline Islands.
SEVENTEENTH	PO Box 25517 Juneau, AK 99802-5517 Tel: (907) 463-2029 (907) 463-2269 http://www.uscg.mil/d17	Alaska.

U. S. COAST GUARD FIFTH DISTRICT ATON UNIT LISTING

AIDS TO NAVIGATION TEAMS

ANT Baltimore
2401 Hawkins Point Rd.
Baltimore, MD 21226
Tel: (410) 576-2646

ANT Crisfield
810 Norris Harbor Drive
Crisfield, MD 21817
Tel: (410) 968-0971

ANT Milford Haven
59 Mill Point Rd.
Hudgins, VA 23076
Tel: (804) 725-5932

ANT Potomac
PO Box 8
St Inigoes, MD 20684
Tel: (301) 872-4036

ANT Cape May
C/O Training Center
1 Munro Ave.
Cape May, NJ 08204
Tel: (609) 898-6987

ANT Fort Macon
2301 E. Fort Macon Rd.
Atlantic Beach, NC 28512
Tel: (252) 240-8440

ANT Oak Island
300-B Caswell Beach Road
Oak Island, NC 28465-8443
Tel: (910) 278-6247

ANT Wanchese
PO Box 908 Harbor Rd.
Wanchese, NC 27959
Tel: (252) 473-1531

ANT Chincoteague
3823 Main Street
Chincoteague, VA 23333
Tel: (757) 336-2872

ANT Hampton Roads
4000 Coast Guard Blvd.
Portsmouth, VA 23703
Tel: (757) 483-8520

ANT Philadelphia
1 Washington Ave.
Philadelphia, PA 19147
Tel: (215) 271-4847/4913

BUOY TENDERS

USCGC BAYBERRY (WLI 65 400)
300-B Caswell Beach Road
Oak Island, NC 28465-8443
Tel: (910) 278-6933

USCGC JAMES RANKIN (WLM 555)
2401 Hawkins Point Rd.
Baltimore, MD 21226
Tel: (410) 576-2640

USCGC SMILAX (WLIC 315)
2301 E. Fort Macon Rd.
Atlantic Beach, NC 28512
Tel: (252) 247-4596

USCGC ELM (WLB 204)
2301 E. Fort Macon Rd.
Atlantic Beach, NC 28512
Tel: (252) 240-8360

USCGC KENNEBEC (WLIC 802)
4000 Coast Guard Blvd.
Portsmouth, VA 23703
Tel: (757) 483-8775

USCGC WILLIAM TATE (WLM 560)
1 Washington Ave.
Philadelphia, PA 19147
Tel: (215) 271-4954/4955/4956

USCGC FRANK DREW (WLM 557)
4000 Coast Guard Blvd.
Portsmouth, VA 23703
Tel: (757) 483-8760/8761/8762

USCGC SLEDGE (WLIC 75303)
2401 Hawkins Point Rd.
Baltimore, MD 21226
Tel: (410) 576-2635

(1) No.	(2) Name and Location	(3) Position	(4) Characteristic	(5) Height	(6) Range	(7) Structure	(8) Remarks
INTRACOASTAL WATERWAY (New Jersey) - Fifth District							
SANDY HOOK TO LITTLE EGG HARBOR (Chart 12324)							
Manasquan - Atlantic City							
Manasquan Inlet							
34932	- LIGHT 3	40-06-01.374N 074-01-54.240W	FI G 6s	35	8	SG on skeleton tower.	HORN: 1 blast ev 30 secs (3s bl). HORN is activated by keying the mic 5 times on VHF-FM 83A (157.175MHz). HORN operates for 30 minutes.
34934	- LIGHT 4	40-06-06.120N 074-01-53.232W	FI R 4s	30	8	TR on skeleton tower.	
Manasquan River							
34935	- LIGHT 2	40-06-24.600N 074-02-46.560W	FI R 4s	15	3	TR on pile.	
34945	- LIGHT 4	40-06-10.564N 074-03-21.910W	FI R 4s	15	3	TR on multi-pile structure.	
34950	- Day beacon 5	40-06-07.854N 074-03-20.942W				SG on pile.	
34955	- Day beacon 7	40-05-47.746N 074-03-30.027W				SG on pile.	
34960	- LIGHT 6	40-05-50.428N 074-03-30.205W	FI R 4s	17	3	TR on pile.	
34965	- LIGHT 9	40-05-32.545N 074-03-50.498W	FI G 4s	15	4	SG on pile.	
34970	- Day beacon 8	40-05-36.060N 074-03-49.500W				TR on pile.	
34975	- Day beacon 11	40-05-24.982N 074-03-59.596W				SG on pile.	
New Jersey Intracoastal Waterway							
<i>Lighted buoys are maintained from May 1 to Nov. 1. Positions of buoys frequently shifted with changing conditions.</i>							
34980	- JUNCTION LIGHT NJICW	40-05-17.956N 074-04-04.711W	FI (2+1)R 6s	17	3	JR-TY on pile.	
34985	- LIGHT 2	40-03-48.840N 074-03-01.920W	Q R	15	4	TR-TY on pile.	
34990	- LIGHT 3	40-03-34.554N 074-03-06.830W	FI G 4s	17	4	SG-SY on pile.	
34995	- LIGHT 4	40-03-24.739N 074-03-11.879W	FI R 4s	15	3	TR-TY on multi-pile structure.	
35000	- Day beacon 6	40-03-15.840N 074-03-06.600W				TR-TY on pile.	
35005	- Day beacon 8	40-03-06.240N 074-03-01.528W				TR-TY on pile.	
35010	- LIGHT 10	40-02-58.902N 074-03-01.367W	FI R 4s	15	4	TR-TY on multi-pile structure.	
35015	- Day beacon 12	40-02-43.672N 074-03-08.793W				TR-TY on pile.	
35020	- Day beacon 13	40-02-17.452N 074-03-17.229W				SG-SY on pile.	
35025	- Day beacon 14	40-02-06.672N 074-03-22.670W				TR-TY on pile.	
35030	- LIGHT 15	40-01-53.220N 074-03-23.580W	Q G	17	4	SG-SY on pile.	
35035	- LIGHT 17	40-01-38.640N 074-03-43.680W	FI G 6s	17	4	SG-SY on pile.	
35040	- LIGHT 19	40-01-15.300N 074-04-09.180W	FI G 4s	15	4	SG-SY on pile.	
35045	- LIGHT 20	40-00-36.600N 074-04-54.420W	FI R 2.5s	15	4	TR-TY on pile.	
35050	- Day beacon 21	40-00-12.550N 074-05-27.720W				SG-SY on pile.	
35055	- LIGHT 22	39-59-35.487N 074-06-21.147W	Q R	15	4	TR-TY on pile.	
35060	- LIGHT 24	39-58-59.522N 074-06-41.451W	FI R 2.5s	15	4	TR-TY on pile.	

(1) No.	(2) Name and Location	(3) Position	(4) Characteristic	(5) Height	(6) Range	(7) Structure	(8) Remarks
INTRACOASTAL WATERWAY (New Jersey) - Fifth District							
SANDY HOOK TO LITTLE EGG HARBOR (Chart 12324)							
Manasquan - Atlantic City							
New Jersey Intracoastal Waterway							
<i>Lighted buoys are maintained from May 1 to Nov. 1. Positions of buoys frequently shifted with changing conditions.</i>							
35065	- LIGHT 26	39-58-36.869N 074-06-29.107W	FI R 6s	16	4	TR-TY on pile.	
35070	- LIGHT 27	39-58-07.927N 074-06-05.082W	FI G 4s	15	4	SG-SY on pile.	
35075	- LIGHT 28	39-57-36.540N 074-06-16.920W	FI R 4s	15	4	TR-TY on pile.	
35080	- LIGHT 29	39-57-04.320N 074-06-01.140W	Q G	16	4	SG-SY on pile.	
35085	- Day beacon 31	39-56-34.853N 074-06-13.197W				SG-SY on pile.	
35090	- Day beacon 33	39-56-21.027N 074-06-18.268W				SG-SY on pile.	
35095	- LIGHT 34	39-56-19.020N 074-06-19.740W	Q R	15	4	TR-TY on pile.	
35100	RIVERBANK LIGHT	39-56-07.692N 074-09-05.220W	FI Y 2.5s	11		On multi-pile structure.	Maintained from May 1 to Sept. 30. Private aid.
35105	- LIGHT 36	39-55-38.826N 074-05-50.693W	FI R 2.5s	17	3	TR-TY on pile.	
35110	- Day beacon 37	39-54-57.120N 074-06-33.960W				SG-SY on pile.	
35115	- LIGHT 38	39-54-47.340N 074-06-57.060W	Q R	17	4	TR-TY on pile.	
35120	- LIGHT 39	39-53-59.044N 074-07-11.127W	FI G 4s	15	4	SG-SY on pile.	
35125	- LIGHT 40	39-51-42.412N 074-07-21.056W	FI R 2.5s	17	4	TR-TY on multi-pile structure.	
35130	BARNEGAT BAY LIGHT BB	39-49-21.420N 074-08-45.600W	Mo (A) W	17	5	MR-I on multi-pile structure.	
35135	BARNEGAT INLET LIGHT BI	39-47-31.966N 074-09-54.879W	Mo (A) W	17	5	MR-I on multi-pile structure.	
35155	- LIGHT 42	39-45-46.351N 074-10-14.467W	Q R	17	4	TR-TY on multi-pile structure.	Maintained year round.
35160	- Day beacon 44	39-45-23.742N 074-09-32.436W				TR-TY on pile.	
35165	- Day beacon 45	39-45-05.398N 074-09-06.561W				SG-SY on pile.	
35167	- Day beacon 46	39-44-59.409N 074-09-08.561W				TR-TY on pile.	
35170	- LIGHT 47	39-44-33.253N 074-08-49.405W	FI G 4s	15	4	SG-SY on pile.	
35175	- LIGHT 48	39-43-51.060N 074-09-02.700W	FI R 2.5s	17	3	TR-TY on pile.	
35180	- Day beacon 49	39-43-34.918N 074-08-47.000W				SG-SY on pile.	
35185	- LIGHT 49A	39-43-15.835N 074-08-28.113W	FI G 4s	15	4	SG-SY on pile.	
35190	- Day beacon 51	39-42-42.416N 074-08-31.059W				SG-SY on pile.	
35195	- LIGHT 52	39-42-20.760N 074-08-45.660W	FI R 4s	15	3	TR-TY on pile.	
35196	- Day beacon 53	39-42-00.692N 074-08-55.532W				SG-SY on pile.	
35198	- Day beacon 54	39-41-35.940N 074-09-14.160W				TR-TY on pile.	
35200	- LIGHT 55	39-41-33.658N 074-09-10.672W	FI G 4s	15	4	SG-SY on pile.	
35205	- LIGHT 56	39-41-22.108N 074-09-44.050W	FI R 4s	15	4	TR-TY on pile.	
35210	- LIGHT 57	39-41-06.982N 074-09-48.598W	FI G 2.5s	15	4	SG-SY on pile.	
35215	- Day beacon 58	39-41-07.341N 074-09-50.564W				TR-TY on pile.	

(1) No.	(2) Name and Location	(3) Position	(4) Characteristic	(5) Height	(6) Range	(7) Structure	(8) Remarks
INTRACOASTAL WATERWAY (New Jersey) - Fifth District							
SANDY HOOK TO LITTLE EGG HARBOR (Chart 12324)							
Manasquan - Atlantic City							
New Jersey Intracoastal Waterway							
<i>Lighted buoys are maintained from May 1 to Nov. 1. Positions of buoys frequently shifted with changing conditions.</i>							
35220	- Day beacon 60	39-40-48.420N 074-10-07.200W				TR-TY on pile.	
35225	- LIGHT 62	39-40-24.651N 074-10-31.272W	Q R	15	3	TR-TY on pile.	
35230	MANAHAWKIN BAY LOWER WARNING LIGHT	39-40-01.429N 074-12-43.502W	FI W 4s	10		NW on pile worded DANGER.	Private aid.
35235	- Day beacon 63	39-40-12.180N 074-11-05.580W				SG-SY on pile.	
35240	New Jersey Intracoastal Waterway Day beacon 64	39-40-10.440N 074-11-19.080W				TR-TY on pile.	
35245	- Day beacon 65	39-40-03.434N 074-11-40.111W				SG-SY on pile.	
35250	- Day beacon 67	39-39-55.514N 074-12-08.054W				SG-SY on pile.	
35255	- LIGHT 68	39-39-55.737N 074-12-10.917W	Q R	15	3	TR-TY on pile.	
35260	- Day beacon 69	39-39-25.740N 074-12-31.680W				SG-SY on pile.	
35265	EAST THOROFARE PIER LIGHT	39-39-17.000N 074-11-04.000W	F Y	12		Green pyramidal structure.	Maintained from May 15 to Nov. 15. Private aid.
35270	- LIGHT 70	39-39-25.553N 074-12-33.353W	Q R	15	4	TR-TY on pile.	
35275	- Day beacon 71	39-38-59.315N 074-12-24.992W				SG-SY on pile.	
35280	- Day beacon 72	39-38-58.562N 074-12-27.000W				TR-TY on pile.	
35285	- LIGHT 74	39-38-26.602N 074-12-18.878W	FI R 4s	15	3	TR-TY on pile.	
35290	- Day beacon 75	39-38-01.020N 074-12-10.320W				SG-SY on pile.	
35295	- Day beacon 76	39-38-00.480N 074-12-12.240W				TR-TY on pile.	
35300	- LIGHT 78	39-37-30.081N 074-12-04.285W	FI R 2.5s	15	3	TR-TY on pile.	
35305	- Day beacon 79	39-37-15.113N 074-12-14.033W				SG-SY on pile.	
35310	- Day beacon 80	39-37-03.218N 074-12-25.515W				TR-TY on pile.	
35315	- LIGHT 81	39-36-49.782N 074-12-34.918W	FI G 2.5s	15	4	SG-SY on pile.	
35320	- Day beacon 82	39-36-32.640N 074-12-36.360W				TR-TY on pile.	
35325	- LIGHT 83	39-36-30.959N 074-12-35.286W	FI G 4s	15	4	SG-SY on pile.	
35330	- Day beacon 84	39-36-28.500N 074-12-38.400W				TR-TY on pile.	
35332	LONG BEACH PIER LIGHT	39-36-00.427N 074-13-08.503W	F Y	12		On end of pier.	Private aid.
35335	- LIGHT 86	39-36-14.160N 074-12-54.420W	FI R 4s	15	4	TR-TY on pile.	
35340	- Day beacon 87	39-36-09.591N 074-12-58.223W				SG-SY on pile.	
35345	- LIGHT 88	39-35-56.103N 074-13-15.134W	FI R 2.5s	15	4	TR-TY on pile.	
35350	- Day beacon 89	39-35-49.800N 074-13-27.349W				SG-SY on pile.	
35355	- Day beacon 91	39-35-46.771N 074-13-33.269W				SG-SY on pile.	
35360	- LIGHT 92	39-35-47.379N 074-13-34.515W	FI R 4s	15	4	TR-TY on pile.	
35365	- Day beacon 94	39-35-31.460N 074-13-48.582W				TR-TY on pile.	

(1) No.	(2) Name and Location	(3) Position	(4) Characteristic	(5) Height	(6) Range	(7) Structure	(8) Remarks
INTRACOASTAL WATERWAY (New Jersey) - Fifth District							
SANDY HOOK TO LITTLE EGG HARBOR (Chart 12324)							
Manasquan - Atlantic City							
New Jersey Intracoastal Waterway							
<i>Lighted buoys are maintained from May 1 to Nov. 1. Positions of buoys frequently shifted with changing conditions.</i>							
35370	- LIGHT 95	39-35-15.356N 074-13-58.750W	Q G	15	4	SG-SY on pile.	
35375	- Day beacon 96	39-34-52.539N 074-13-52.295W				TR-TY on pile.	
35380	- LIGHT 97	39-34-51.942N 074-13-49.921W	FI G 2.5s	15	3	SG-SY on pile.	
35385	- Day beacon 98	39-34-46.809N 074-13-54.921W				TR-TY on pile.	
LITTLE EGG HARBOR TO CAPE MAY (Chart 12316)							
Manasquan - Atlantic City							
New Jersey Intracoastal Waterway							
<i>Lighted buoys are maintained from May 1 to Nov. 1. Positions of buoys frequently shifted with changing conditions.</i>							
35390	- LIGHT 99	39-34-31.860N 074-14-12.000W	FI G 4s	15	4	SG-SY on pile.	
35395	- Day beacon 101	39-34-19.735N 074-14-21.473W				SG-SY on pile.	
35400	- Day beacon 102	39-34-19.107N 074-14-23.782W				TR-TY on pile.	
35405	- LIGHT 104	39-34-13.380N 074-14-28.740W	FI R 2.5s	15	4	TR-TY on pile.	
35410	- Day beacon 106	39-34-03.335N 074-14-44.762W				TR-TY on pile.	
35415	- Day beacon 107	39-33-56.167N 074-14-56.105W				SG-SY on pile.	
35417	LITTLE EGG HARBOR RESEARCH LIGHT A	39-33-22.380N 074-16-14.340W	FI W 6s			NW on pile.	Private aid.
35420	- JUNCTION LIGHT LB	39-33-44.639N 074-15-11.308W	FI (2+1)R 6s	15	4	JR-TY on pile.	
35425	- Day beacon 108	39-33-27.300N 074-15-31.620W				TR-TY on pile.	
35430	- LIGHT 109	39-33-19.213N 074-15-28.103W	FI G 4s	15	4	SG-SY on pile.	
35435	- LIGHT 110	39-32-25.257N 074-16-14.697W	FI R 4s	15	4	TR-TY on pile.	
35445	- Buoy 112	39-31-55.424N 074-16-40.512W				Red nun with yellow triangle.	Maintained year round.
35450	- Buoy 113	39-31-38.055N 074-16-52.707W				Green can with yellow square.	Maintained year round.
35455	- Buoy 114	39-31-28.703N 074-17-07.484W				Red nun with yellow triangle.	Maintained year round.
35457	- Buoy 114A	39-31-08.408N 074-17-17.338W				Red nun with yellow triangle.	Maintained year round.
35460	- <i>Lighted Buoy 115</i>	39-31-06.486N 074-17-14.974W	FI G 4s		4	Green with yellow square.	Replaced by can f from Nov. 1 to May 1.
35465	- <i>Lighted Buoy 116</i>	39-30-49.717N 074-17-38.330W	FI R 4s		3	Red with yellow triangle.	Replaced by nun f from Nov. 1 to May 1.
35467	- Buoy 116A	39-30-39.382N 074-18-02.526W				Red nun with yellow triangle.	Maintained year round.
35470	- Buoy 117	39-30-32.614N 074-18-08.947W				Green can with yellow square.	Maintained year round.
35480	- <i>Lighted Buoy 120</i>	39-30-24.752N 074-18-36.066W	Q R		4	Red with yellow triangle.	Replaced by nun f from Nov. 1 to May 1.
35485	- <i>Junction Lighted Buoy LEI</i>	39-30-15.359N 074-18-37.480W	FI (2+1)G 6s		4	Green and red with yellow square.	Replaced by can f from Nov. 1 to May 1.
35490	- Buoy 123	39-30-24.015N 074-18-49.145W				Green can with yellow square.	Maintained year round.

(1) No.	(2) Name and Location	(3) Position	(4) Characteristic	(5) Height	(6) Range	(7) Structure	(8) Remarks
INTRACOASTAL WATERWAY (New Jersey) - Fifth District							
LITTLE EGG HARBOR TO CAPE MAY (Chart 12316)							
Manasquan - Atlantic City							
New Jersey Intracoastal Waterway							
<i>Lighted buoys are maintained from May 1 to Nov. 1. Positions of buoys frequently shifted with changing conditions.</i>							
35497	- Buoy 125	39-30-23.153N 074-19-27.046W				Green can with yellow square.	Maintained year round.
35500	- LIGHT 126	39-30-28.526N 074-20-18.589W	Q R	15	4	TR-TY on multi-pile structure.	Maintained year round.
35505	OSBORN ISLAND LIGHT 2	39-32-30.423N 074-22-49.554W	Q R	10		TR on pile.	Maintained from Mar. 1 to Dec. 1. Private aid.
35520	- LIGHT 127	39-30-18.117N 074-20-32.111W	FI G 2.5s	15	3	SG-SY on pile.	
35525	- Day beacon 128	39-30-14.710N 074-20-35.281W				TR-TY on pile.	
35530	- Day beacon 129	39-30-06.805N 074-20-37.021W				SG-SY on pile.	
35536	- LIGHT 130	39-30-00.575N 074-20-45.567W	FI R 4s		3	TR-TY on pile.	
35537	- Day beacon 130A	39-29-53.923N 074-21-00.392W				TR-TY on pile.	
35540	- Day beacon 131	39-29-50.647N 074-21-04.974W				SG-SY on pile.	
35540.1	- Day beacon 131A	39-29-51.761N 074-21-23.071W				SG-SY on pile.	
35550	- LIGHT 132	39-29-57.523N 074-21-26.867W	FI R 2.5s	15	3	TR-TY on pile.	
35555	- Day beacon 135	39-29-54.921N 074-22-04.416W				SG-SY on pile.	
35560	- Day beacon 136	39-29-57.597N 074-22-07.179W				TR-TY on pile.	
35565	- Day beacon 138	39-29-55.229N 074-22-29.510W				TR-TY on pile.	
35570	- LIGHT 139	39-29-52.631N 074-22-52.067W	Q G	15	3	SG-SY on multi-pile structure.	
35575	- LIGHT 141	39-29-24.685N 074-22-53.783W	FI G 2.5s	15	4	SG-SY on multi-pile structure.	
35580	- Day beacon 143	39-29-13.046N 074-22-40.583W				SG-SY on pile.	
35585	- Day beacon 144	39-29-04.330N 074-22-32.752W				TR-TY on pile.	
35590	- LIGHT 145	39-29-02.022N 074-22-27.727W	Q G	15	3	SG-SY on pile.	
35595	- Day beacon 147	39-28-45.450N 074-22-45.626W				SG-SY on pile.	
35600	- Day beacon 148	39-28-35.473N 074-22-58.517W				TR-TY on pile.	
35605	- LIGHT 149	39-28-22.722N 074-23-14.027W	FI G 4s	15	4	SG-SY on pile.	
35610	- Day beacon 150	39-28-15.270N 074-23-23.673W				TR-TY on pile.	
35615	- Day beacon 152	39-28-05.520N 074-23-33.180W				TR-TY on pile.	
35620	- LIGHT 153	39-27-56.761N 074-23-39.415W	Q G	15	4	SG-SY on pile.	
35625	- Day beacon 155	39-27-43.997N 074-23-37.274W				SG-SY on pile.	
35630	- Day beacon 156	39-27-34.889N 074-23-37.762W				TR-TY on pile.	
35631	- Buoy 156A	39-27-17.739N 074-23-33.958W				Red nun with yellow triangle.	Maintained from May 1 to Nov. 1. Removed when endangered by ice.
35635	- Day beacon 157	39-27-15.937N 074-23-32.819W				SG-SY on pile.	
35640	- Day beacon 159	39-27-03.823N 074-23-31.259W				SG-SY on pile.	

(1) No.	(2) Name and Location	(3) Position	(4) Characteristic	(5) Height	(6) Range	(7) Structure	(8) Remarks
INTRACOASTAL WATERWAY (New Jersey) - Fifth District							
LITTLE EGG HARBOR TO CAPE MAY (Chart 12316)							
Manasquan - Atlantic City							
New Jersey Intracoastal Waterway							
<i>Lighted buoys are maintained from May 1 to Nov. 1. Positions of buoys frequently shifted with changing conditions.</i>							
35645	- LIGHT 160	39-26-52.515N 074-23-31.248W	FI R 4s	15	4	TR-TY on pile.	
35647	- Buoy 160A	39-26-47.520N 074-23-28.922W				Red nun with yellow triangle.	Maintained from May 1 to Nov. 1. Removed when endangered by ice.
35649	- Buoy 161	39-26-55.013N 074-23-30.929W				Green can with yellow square.	Maintained from May 1 to Nov. 1. Removed when endangered by ice.
35650	- Day beacon 162	39-26-41.040N 074-23-28.928W				TR-TY on pile.	
35655	- LIGHT 163	39-26-33.234N 074-23-28.576W	FI G 4s	15	4	SG-SY on pile.	
35660	- Day beacon 164	39-26-27.677N 074-23-38.023W				TR-TY on pile.	
35665	- Day beacon 165	39-26-16.452N 074-23-55.399W				SG-SY on pile.	
35670	- Day beacon 166	39-26-10.429N 074-24-06.444W				TR-TY on pile.	
35675	- LIGHT 167	39-26-04.510N 074-24-11.969W	Q G	15	4	SG-SY on pile.	
35680	- Day beacon 168	39-26-05.843N 074-24-13.837W				TR-TY on pile.	
35685	- LIGHT 170	39-26-05.579N 074-24-50.112W	Q R	15	3	TR-TY on pile.	
35687	- Day beacon 170A	39-25-50.831N 074-25-01.530W				TR-TY on pile.	
35690	- Day beacon 171	39-25-59.522N 074-24-54.252W				SG-SY on pile.	
35695	- LIGHT 172	39-25-47.160N 074-25-03.840W	FI R 4s	15	4	TR-TY on pile.	
35700	- LIGHT 173	39-25-33.960N 074-25-20.220W	FI G 4s	15	4	SG-SY on pile.	
35705	- LIGHT 174	39-25-20.544N 074-25-30.606W	FI R 6s	15	4	TR-TY on pile.	
35710	- Day beacon 175	39-25-10.547N 074-25-35.608W				SG-SY on pile.	
35715	- Day beacon 176	39-24-47.338N 074-25-53.459W				TR-TY on pile.	
35720	- LIGHT 177	39-24-35.221N 074-25-59.837W	FI G 2.5s	15	3	SG-SY on pile.	
35725	- Day beacon 178	39-24-16.607N 074-26-07.102W				TR-TY on pile.	
35730	- LIGHT 179	39-24-02.040N 074-26-00.660W	Q G	15	4	SG-SY on pile.	
35735	- JUNCTION LIGHT AB	39-23-47.665N 074-26-01.273W	FI (2+1)R 6s	15	4	JR-TY on pile.	
35740	- <i>Lighted Buoy 181</i>	39-23-30.987N 074-25-43.958W	FI G 4s		4	Green with yellow square.	Replaced by can from Nov 1 to May 1.
35745	- LIGHT 182	39-23-24.234N 074-25-57.416W	Q R	15	4	TR-TY on pile.	
35750	- Day beacon 184	39-23-22.500N 074-26-21.480W				TR-TY on pile.	
35755	- Day beacon 185	39-23-20.114N 074-26-49.491W				SG-SY on pile.	
35760	- LIGHT 186	39-23-19.911N 074-26-56.651W	FI R 2.5s	15	3	TR-TY on multi-pile structure.	
35765	- Day beacon 187	39-23-18.353N 074-26-54.033W				SG-SY on pile.	
35770	- LIGHT 189	39-23-02.760N 074-27-07.800W	FI G 4s	15	4	SG-SY on pile.	

(1) No.	(2) Name and Location	(3) Position	(4) Characteristic	(5) Height	(6) Range	(7) Structure	(8) Remarks
INTRACOASTAL WATERWAY (New Jersey) - Fifth District							
LITTLE EGG HARBOR TO CAPE MAY (Chart 12316)							
Manasquan - Atlantic City							
New Jersey Intracoastal Waterway							
<i>Lighted buoys are maintained from May 1 to Nov. 1. Positions of buoys frequently shifted with changing conditions.</i>							
35775	- Day beacon 191	39-22-47.430N 074-27-03.270W				SG-SY on pile.	
35780	ABSECON WATERWAY UPPER PIER LIGHT	39-23-16.000N 074-27-41.000W	F Y				Maintained from May 1 to Dec. 1. Private aid.
35785	ABSECON WATERWAY LOWER PIER LIGHT	39-22-30.420N 074-27-16.540W	F Y				Maintained from May 1 to Dec. 1. Private aid.
35790	- Day beacon 193 60 feet northeast of channel limit.	39-22-27.480N 074-27-31.080W				SG-SY on pile.	
35795	- Day beacon 195	39-22-25.500N 074-27-33.120W				SG-SY on pile.	
35800	- Day beacon 197	39-22-21.300N 074-27-31.260W				SG-SY on pile.	
35805	- Day beacon 199	39-22-10.560N 074-27-15.060W				SG-SY on pile.	
35810	- Day beacon 201	39-22-12.900N 074-26-52.800W				SG-SY on pile.	
35815	- Day beacon 202	39-22-05.129N 074-26-45.289W				TR-TY on pile.	
35820	- Day beacon 204	39-21-41.472N 074-26-46.425W				TR-TY on pile.	
35825	- Day beacon 206	39-21-37.980N 074-26-50.100W				TR-TY on pile.	
Atlantic City - Cape May							
New Jersey Intracoastal Waterway							
<i>Lighted buoys are maintained from May 1 to Nov. 1. Positions of buoys frequently shifted with changing conditions.</i>							
35830	- Day beacon 207	39-21-34.960N 074-26-59.038W				SG-SY on pile.	
35835	- Day beacon 209	39-21-28.648N 074-27-09.658W				SG-SY on pile.	
35840	- LIGHT 211	39-20-33.563N 074-29-04.598W	Q G	15	4	SG-SY on pile.	
35845	- Day beacon 213	39-21-11.007N 074-29-34.506W				SG-SY on pile.	
35850	- LIGHT 215	39-21-12.360N 074-29-38.760W	Q G	15	3	SG-SY on pile.	
35855	- Day beacon 217	39-21-10.343N 074-29-40.030W				SG-SY on pile.	
35860	- LIGHT 219	39-20-52.620N 074-29-35.760W	FI G 4s	15	4	SG-SY on pile.	
35865	- LIGHT 220	39-20-45.679N 074-29-48.737W	FI R 4s	15	3	TR-TY on pile.	
35867	- Day beacon 221	39-20-40.666N 074-30-17.604W				SG-SY on pile.	
35870	- Day beacon 222	39-20-33.240N 074-30-41.160W				TR-TY on pile.	
35880	- LIGHT 225	39-20-05.808N 074-30-54.298W	FI G 4s	15	4	SG-SY on pile.	
35885	- LIGHT 226	39-19-36.056N 074-31-11.690W	FI R 2.5s	15	4	TR-TY on pile.	
35890	- Day beacon 228	39-19-32.834N 074-31-18.045W				TR-TY on pile.	
35895	- LIGHT 230	39-19-15.017N 074-31-42.652W	Q R	15	3	TR-TY on pile.	
35900	- Day beacon 231	39-19-15.337N 074-31-53.332W				SG-SY on pile.	
35905	- LIGHT 233	39-19-41.304N 074-32-17.436W	Q G	15	4	SG-SY on pile.	
35910	- Day beacon 234	39-19-35.944N 074-32-28.458W				TR-TY on pile.	

(1) No.	(2) Name and Location	(3) Position	(4) Characteristic	(5) Height	(6) Range	(7) Structure	(8) Remarks
INTRACOASTAL WATERWAY (New Jersey) - Fifth District							
LITTLE EGG HARBOR TO CAPE MAY (Chart 12316)							
Atlantic City - Cape May							
New Jersey Intracoastal Waterway							
<i>Lighted buoys are maintained from May 1 to Nov. 1. Positions of buoys frequently shifted with changing conditions.</i>							
35915	- Day beacon 235	39-19-27.332N 074-32-42.238W				SG-SY on pile.	
35920	- Day beacon 236	39-19-16.612N 074-32-49.572W				TR-TY on pile.	
35925	- Day beacon 238	39-19-09.143N 074-33-03.565W				TR-TY on pile.	
35930	- Day beacon 239	39-18-59.213N 074-33-27.584W				SG-SY on pile.	
35940	- Day beacon 241	39-18-55.854N 074-33-32.758W				SG-SY on pile.	
35945	- Day beacon 243	39-18-53.549N 074-33-33.260W				SG-SY on pile.	
35950	- Day beacon 245	39-18-30.726N 074-33-36.491W				SG-SY on pile.	
35955	- Buoy 246	39-18-16.745N 074-33-34.698W				Red nun with yellow triangle.	Maintained year round.
35960	- Buoy 246A	39-18-14.225N 074-33-40.402W				Red nun with yellow triangle.	Maintained year round.
35965	- Buoy 247	39-18-11.449N 074-33-41.691W				Green can with yellow square.	Maintained year round.
35970	- Buoy 248	39-18-10.554N 074-33-51.232W				Red nun with yellow triangle.	Maintained year round.
35975	- Buoy 249	39-18-09.566N 074-33-50.595W				Green can with yellow square.	Maintained year round.
35977	- Buoy 250	39-18-08.622N 074-33-58.736W				Red nun with yellow triangle.	Maintained year round.
35978	- Buoy 250A	39-17-48.780N 074-33-55.200W				Red nun with yellow triangle.	
35979	- Buoy 251	39-18-04.440N 074-34-10.080W				Green can with yellow square.	Maintained year round.
35980	- LIGHT 252	39-17-11.364N 074-34-39.508W	FI R 2.5s	15	4	TR-TY on pile.	
35985	- Day beacon 254	39-17-02.509N 074-34-58.757W				TR-TY on pile.	
35995	- Buoy 258	39-16-45.528N 074-35-08.776W				Red nun with yellow triangle.	
36000	- LIGHT 260	39-16-42.159N 074-35-29.240W	FI R 4s	15	3	TR-TY on pile.	
36005	- LIGHT 262	39-16-50.534N 074-35-50.556W	Q R	15	3	TR-TY on pile.	
36007	- Buoy 263	39-16-48.127N 074-35-59.122W				Green can with yellow square.	Maintained year round.
36009	- Buoy 263A	39-16-41.036N 074-36-08.468W				Green can with yellow square.	Maintained year round.
36010	- LIGHT 264	39-16-45.758N 074-36-03.824W	FI R 2.5s	15	3	TR-TY on pile.	
36011	- Buoy 264A	39-16-25.925N 074-36-13.030W				Red nun with yellow triangle.	Maintained year round.
36015	- Buoy 265	39-16-34.500N 074-36-11.820W				Green can with yellow square.	Maintained year round.
36020	- Day beacon 266	39-16-16.704N 074-36-16.324W				TR-TY on pile.	
36025	- Day beacon 268	39-16-11.742N 074-36-24.585W				TR-TY on pile.	
36030	- Day beacon 270	39-16-08.774N 074-36-32.047W				TR-TY on pile.	
36035	- Day beacon 272	39-16-10.400N 074-36-44.474W				TR-TY on pile.	
36040	- Day beacon 273	39-16-08.346N 074-36-51.378W				SG-SY on pile.	

(1) No.	(2) Name and Location	(3) Position	(4) Characteristic	(5) Height	(6) Range	(7) Structure	(8) Remarks
INTRACOASTAL WATERWAY (New Jersey) - Fifth District							
LITTLE EGG HARBOR TO CAPE MAY (Chart 12316)							
Atlantic City - Cape May							
New Jersey Intracoastal Waterway							
<i>Lighted buoys are maintained from May 1 to Nov. 1. Positions of buoys frequently shifted with changing conditions.</i>							
36045	- LIGHT 275	39-16-01.860N 074-37-00.480W	FI G 4s	15	4	SG-SY on pile.	
36050	- Day beacon 276	39-15-50.915N 074-37-10.567W				TR-TY on pile.	
36055	- Day beacon 277	39-15-45.296N 074-37-14.487W				SG-SY on pile.	
36060	- Day beacon 278	39-15-39.701N 074-37-21.376W				TR-TY on pile.	
36065	- LIGHT 280	39-15-32.116N 074-37-28.447W	Q R	15	4	TR-TY on pile.	
36070	- Day beacon 282	39-15-20.826N 074-37-34.803W				TR-TY on pile.	
36075	- Day beacon 284	39-15-01.547N 074-37-38.257W				TR-TY on pile.	
36080	- Day beacon 285	39-14-56.574N 074-37-36.084W				SG-SY on pile.	
36085	- Day beacon 286	39-14-50.456N 074-37-38.774W				TR-TY on pile.	
36090	- Day beacon 288	39-14-41.774N 074-37-47.362W				TR-TY on pile.	
36095	- Day beacon 290	39-14-37.126N 074-37-56.607W				TR-TY on pile.	
36100	- Day beacon 291	39-14-35.454N 074-37-56.960W				SG-SY on pile.	
36105	- LIGHT 293	39-14-34.313N 074-38-08.856W	FI G 4s	15	4	SG-SY on pile.	
36110	- Day beacon 295	39-14-36.395N 074-38-17.746W				SG-SY on pile.	
36115	- Day beacon 296	39-14-25.066N 074-38-34.357W				TR-TY on pile.	
36120	- Day beacon 297	39-14-23.318N 074-38-47.284W				SG-SY on pile.	
36125	- Day beacon 298	39-14-06.410N 074-38-51.298W				TR-TY on pile.	
36130	- LIGHT 299	39-14-01.534N 074-38-45.813W	FI G 4s	15	4	SG-SY on pile.	
36135	- Day beacon 301	39-13-51.927N 074-38-49.308W				SG-SY on pile.	
36140	- Day beacon 302	39-13-41.440N 074-38-59.803W				TR-TY on pile.	
36145	- LIGHT 304	39-13-39.514N 074-39-18.637W	Q R	15	3	TR-TY on pile.	
36150	- Day beacon 306	39-13-35.486N 074-39-20.183W				TR-TY on pile.	
36155	- Day beacon 308	39-13-28.626N 074-39-17.030W				TR-TY on pile.	
36160	- LIGHT 309	39-13-02.851N 074-39-17.158W	FI G 4s	15	4	SG-SY on pile.	
36165	- LIGHT 310	39-13-02.636N 074-39-19.569W	FI R 2.5s	15	4	TR-TY on pile.	
36170	- Day beacon 311	39-12-55.046N 074-39-36.026W				SG-SY on pile.	
36175	- Day beacon 313	39-12-50.932N 074-39-39.258W				SG-SY on pile.	
36180	- Day beacon 314 70 feet west of channel limit.	39-12-39.005N 074-39-44.602W				TR-TY on pile.	
36185	- Day beacon 316	39-12-28.628N 074-39-56.441W				TR-TY on pile.	
36190	- LIGHT 317	39-12-25.059N 074-40-04.284W	FI G 2.5s	15	4	SG-SY on pile.	
36195	- Day beacon 318	39-12-22.900N 074-40-08.708W				TR-TY on pile.	

(1) No.	(2) Name and Location	(3) Position	(4) Characteristic	(5) Height	(6) Range	(7) Structure	(8) Remarks
INTRACOASTAL WATERWAY (New Jersey) - Fifth District							
LITTLE EGG HARBOR TO CAPE MAY (Chart 12316)							
Atlantic City - Cape May							
New Jersey Intracoastal Waterway							
<i>Lighted buoys are maintained from May 1 to Nov. 1. Positions of buoys frequently shifted with changing conditions.</i>							
36200	- Day beacon 319	39-12-22.083N 074-40-07.626W				SG-SY on pile.	
36205	- Day beacon 320	39-12-18.356N 074-40-13.025W				TR-TY on pile.	
36210	- LIGHT 322	39-12-14.491N 074-40-18.393W	FI R 2.5s	15	3	TR-TY on pile.	
36215	- Day beacon 323	39-12-12.000N 074-40-39.240W				SG-SY on pile.	
36220	- Day beacon 325	39-12-11.340N 074-40-42.900W				SG-SY on pile.	
36225	- Day beacon 327	39-12-09.448N 074-40-46.491W				SG-SY on pile.	
36230	- LIGHT 328	39-12-03.394N 074-40-49.639W	Q R	15	4	TR-TY on pile.	
36235	- Day beacon 329	39-12-01.850N 074-40-47.651W				SG-SY on pile.	
36240	- Day beacon 330	39-11-54.164N 074-41-04.954W				TR-TY on pile.	
36245	- LIGHT 331	39-11-52.028N 074-41-24.484W	FI G 2.5s	15	3	SG-SY on pile.	
36250	- Day beacon 333	39-11-49.800N 074-41-28.980W				SG-SY on pile.	
36255	- Day beacon 335	39-11-42.976N 074-41-33.608W				SG-SY on pile.	
36260	- LIGHT 336	39-11-30.952N 074-41-42.892W	FI R 4s	15	4	TR-TY on pile.	
36265	- Day beacon 337	39-11-21.240N 074-41-50.460W				SG-SY on pile.	
36270	- Day beacon 339	39-11-11.904N 074-41-56.281W				SG-SY on pile.	
36275	- LIGHT 340	39-11-06.870N 074-41-58.213W	FI R 2.5s	15	4	TR-TY on multi-pile structure.	
36280	- Day beacon 342	39-10-56.280N 074-41-58.920W				TR-TY on pile.	
36285	- Day beacon 344	39-10-45.831N 074-41-58.973W				TR-TY on pile.	
36290	- Day beacon 345	39-10-44.700N 074-41-57.180W				SG-SY on pile.	
36295	- LIGHT 346	39-10-29.798N 074-41-52.558W	Q R	15	4	TR-TY on pile.	
36300	- Day beacon 348	39-10-16.771N 074-41-59.460W				TR-TY on pile.	
36305	- LIGHT 349	39-10-09.880N 074-42-01.441W	FI G 2.5s	15	4	SG-SY on pile.	
36310	- Day beacon 350	39-10-03.723N 074-42-01.003W				TR-TY on pile.	
36315	- Day beacon 352	39-09-56.192N 074-41-56.859W				TR-TY on pile.	
36320	- Day beacon 354	39-09-46.124N 074-41-52.806W				TR-TY on pile.	
36325	- Day beacon 356	39-09-39.871N 074-41-54.030W				TR-TY on pile.	
36330	- Day beacon 357	39-09-19.702N 074-42-14.954W				SG-SY on pile.	
36335	- LIGHT 359	39-09-03.600N 074-42-28.680W	FI G 4s	15	4	SG-SY on pile.	
36340	- Day beacon 361	39-08-59.760N 074-42-28.020W				SG-SY on pile.	
36345	- LIGHT 362	39-08-39.960N 074-42-20.760W	Q R	15	3	TR-TY on pile.	
36350	- Day beacon 363	39-08-33.236N 074-42-33.631W				SG-SY on pile.	

(1) No.	(2) Name and Location	(3) Position	(4) Characteristic	(5) Height	(6) Range	(7) Structure	(8) Remarks
INTRACOASTAL WATERWAY (New Jersey) - Fifth District							
LITTLE EGG HARBOR TO CAPE MAY (Chart 12316)							
Atlantic City - Cape May							
New Jersey Intracoastal Waterway							
<i>Lighted buoys are maintained from May 1 to Nov. 1. Positions of buoys frequently shifted with changing conditions.</i>							
36355	- Day beacon 364	39-08-20.640N 074-42-48.420W				TR-TY on pile.	
36360	- LIGHT 365	39-08-13.740N 074-42-52.680W	FI G 2.5s	15	3	SG-SY on pile.	
36365	- Day beacon 367	39-08-09.120N 074-42-53.040W				SG-SY on pile.	
36370	- Day beacon 368	39-07-55.020N 074-42-53.220W				TR-TY on pile.	
36375	- Day beacon 370	39-07-32.042N 074-42-56.565W				TR-TY on pile.	
36380	- <i>Lighted Buoy 372</i>	39-07-11.310N 074-43-06.438W	Q R		4	Red with yellow triangle.	Replaced by nun from Nov. 1 to May 1.
36385	- Buoy 374	39-06-56.868N 074-43-30.858W				Red nun with yellow triangle.	Maintained year round.
36393	- Buoy 376	39-06-30.424N 074-44-15.275W				Red nun with yellow triangle.	Maintained year round.
36395	- LIGHT 377	39-06-26.280N 074-44-43.380W	FI G 4s	15	4	SG-SY on pile.	
36400	- LIGHT 378	39-06-03.480N 074-45-00.360W	FI R 4s	17	4	TR-TY on pile.	
36405	- Day beacon 380	39-06-01.980N 074-45-12.720W				TR-TY on pile.	
36410	- Day beacon 381	39-06-06.480N 074-45-22.920W				SG-SY on pile.	
36415	- Day beacon 382	39-06-08.820N 074-45-38.220W				TR-TY on pile.	
36420	- LIGHT 383	39-06-04.175N 074-45-48.563W	FI G 2.5s	15	4	SG-SY on pile.	
36425	- Day beacon 384	39-05-52.909N 074-45-52.491W				TR-TY on pile.	
36427	- Day beacon 385	39-05-45.307N 074-45-55.112W				SG-SY on pile	
36430	- LIGHT 386	39-05-32.547N 074-46-01.128W	FI R 4s	15	3	TR-TY on pile.	
36435	- Day beacon 388	39-05-17.210N 074-46-08.778W				TR-TY on pile.	
36440	- Day beacon 389	39-05-10.567N 074-46-10.130W				SG-SY on pile.	
36445	- Day beacon 390	39-04-59.602N 074-46-17.664W				TR-TY on pile.	
36450	- LIGHT 392	39-04-48.692N 074-46-23.348W	FI R 4s	15	4	TR-TY on pile.	
36455	- Day beacon 393	39-04-48.780N 074-46-21.720W				SG-SY on pile.	
36460	- Day beacon 395	39-04-41.356N 074-46-20.830W				SG-SY on pile.	
36465	- Day beacon 397	39-04-34.440N 074-46-13.500W				SG-SY on pile.	
36470	- Day beacon 399	39-04-28.800N 074-46-04.320W				SG-SY on pile.	
36475	- Day beacon 401	39-04-24.964N 074-45-50.127W				SG-SY on pile.	
36480	- Day beacon 402	39-04-19.560N 074-45-33.480W				TR-TY on pile.	
36485	- Day beacon 404	39-04-12.840N 074-45-22.440W				TR-TY on pile.	
36490	- Day beacon 406	39-04-06.218N 074-45-16.729W				TR-TY on pile.	
36495	- Day beacon 408	39-03-59.820N 074-45-18.360W				TR-TY on pile.	
36500	- Day beacon 410	39-03-47.460N 074-45-26.820W				TR-TY on pile.	

(1) No.	(2) Name and Location	(3) Position	(4) Characteristic	(5) Height	(6) Range	(7) Structure	(8) Remarks
INTRACOASTAL WATERWAY (New Jersey) - Fifth District							
LITTLE EGG HARBOR TO CAPE MAY (Chart 12316)							
Atlantic City - Cape May							
New Jersey Intracoastal Waterway							
<i>Lighted buoys are maintained from May 1 to Nov. 1. Positions of buoys frequently shifted with changing conditions.</i>							
36505	- Day beacon 412	39-03-39.060N 074-45-36.780W				TR-TY on pile.	
36510	- Day beacon 414	39-03-11.944N 074-46-10.079W				TR-TY on pile.	
36515	- Buoy 416	39-02-53.193N 074-46-31.130W				Red nun with yellow triangle.	
36517	- Buoy 417	39-02-44.040N 074-46-36.392W				Green can with yellow square.	
36518	- Buoy 418	39-02-45.571N 074-46-38.668W				Red nun with yellow triangle.	
36520	- Buoy 419	39-02-41.567N 074-46-42.384W				Green can with yellow square.	
36525	- Buoy 421	39-02-41.089N 074-46-50.044W				Green can with yellow square.	
36530	- Buoy 423	39-02-36.506N 074-46-53.817W				Green can with yellow square.	
36535	- Buoy 424	39-02-31.858N 074-46-57.945W				Red nun with yellow triangle.	
36540	- Buoy 425	39-02-32.373N 074-46-55.633W				Green can with yellow square.	
36545	- Day beacon 427	39-02-34.140N 074-47-16.680W				SG-SY on pile.	
36550	- Day beacon 429	39-02-29.880N 074-47-28.860W				SG-SY on pile.	
36555	- Day beacon 430	39-02-22.080N 074-47-38.400W				TR-TY on pile.	
36560	- LIGHT 431	39-02-14.982N 074-47-52.591W	FI G 4s	15	4	SG-SY on pile.	
36565	- Day beacon 433	39-02-09.309N 074-47-57.005W				SG-SY on pile.	
36570	- Day beacon 434	39-02-01.860N 074-48-00.115W				TR-TY on pile.	
36575	- LIGHT 436	39-01-56.572N 074-48-02.373W	Q R	15	4	TR-TY on pile.	
36580	- LIGHT 437	39-01-58.152N 074-48-20.931W	FI G 2.5s	15	4	SG-SY on pile.	
36585	- Day beacon 439	39-01-55.685N 074-48-30.669W				SG-SY on pile.	
36590	- Day beacon 441	39-01-29.580N 074-48-46.920W				SG-SY on pile.	
36595	- LIGHT 442	39-01-09.781N 074-48-41.747W	FI R 4s	15	3	TR-TY on pile.	
36600	- LIGHT 443	39-00-52.850N 074-48-53.507W	FI G 2.5s	15	3	SG-SY on pile.	
36605	- Day beacon 444	39-00-40.849N 074-48-59.428W				TR-TY on pile.	
36607	- Buoy 444A	39-00-36.060N 074-49-02.040W				Red nun with yellow triangle.	
36610	- LIGHT 445	39-00-36.427N 074-48-59.711W	FI G 4s	15	4	SG-SY on pile.	
36615	- Day beacon 446	39-00-32.514N 074-49-07.248W				TR-TY on pile.	
36620	- Day beacon 448	39-00-27.893N 074-49-19.189W				TR-TY on pile.	
36625	- LIGHT 449	39-00-25.080N 074-49-24.360W	FI G 4s	15	4	SG-SY on pile.	
36630	- Day beacon 450	39-00-25.512N 074-49-27.265W				TR-TY on pile.	
36635	- Day beacon 452	39-00-24.459N 074-49-35.185W				TR-TY on pile.	
36637	- LIGHT 452A	39-00-27.343N 074-49-46.018W	FI R 2.5s	15	4	TR-TY on pile.	

(1) No.	(2) Name and Location	(3) Position	(4) Characteristic	(5) Height	(6) Range	(7) Structure	(8) Remarks
INTRACOASTAL WATERWAY (New Jersey) - Fifth District							
LITTLE EGG HARBOR TO CAPE MAY (Chart 12316)							
Atlantic City - Cape May							
New Jersey Intracoastal Waterway							
<i>Lighted buoys are maintained from May 1 to Nov. 1. Positions of buoys frequently shifted with changing conditions.</i>							
36639	- LIGHT 453	39-00-26.527N 074-49-45.899W	FI G 2.5s	15	3	SG-SY on pile.	
36640	- Day beacon 453A	39-00-24.180N 074-49-56.640W				SG-SY on pile.	
36645	- LIGHT 454	39-00-24.960N 074-49-58.860W	FI R 4s	15	4	TR-TY on pile.	
36650	- Day beacon 455	39-00-21.240N 074-50-00.000W				SG-SY on pile.	
36655	- Day beacon 457	39-00-07.080N 074-50-06.240W				SG-SY on pile.	
36660	- Day beacon 459	39-00-00.423N 074-50-10.629W				SG-SY on pile.	
36665	- LIGHT 461	38-59-57.093N 074-50-11.595W	FI G 2.5s	15	4	SG-SY on pile.	
36670	- LIGHT 463	38-59-38.904N 074-50-02.700W	FI G 4s	15	4	SG-SY on pile.	
36675	- LIGHT 465	38-59-04.851N 074-50-20.716W	Q G	15	4	SG-SY on pile.	
36680	- Day beacon 466	38-59-06.132N 074-50-26.917W				TR-TY on pile.	
36685	- LIGHT 468	38-59-09.120N 074-50-38.700W	Q R	15	4	TR-TY on pile.	
36690	- Day beacon 469	38-59-03.666N 074-50-41.799W				SG-SY on pile.	
36690.1	- Day beacon 469A	38-59-01.113N 074-50-43.725W				SG-SY on pile.	
36695	- LIGHT 470	38-58-49.516N 074-50-47.647W	FI R 2.5s	15	3	TR-TY on pile.	
36700	- LIGHT 471	38-58-41.517N 074-51-01.458W	FI G 4s	15	4	SG-SY on pile.	
36705	- Day beacon 473	38-58-15.252N 074-51-46.486W				SG-SY on pile.	
36710	- LIGHT 475	38-58-06.405N 074-52-01.111W	FI G 4s	15	4	SG-SY on pile.	
36715	- Day beacon 477	38-57-57.003N 074-52-08.444W				SG-SY on pile.	
36720	- Day beacon 479	38-57-47.701N 074-52-13.232W				SG-SY on pile.	
Cape May Harbor							
36730	- <i>Lighted Buoy 3</i>	38-57-03.405N 074-52-40.313W	FI G 2.5s		4	Green.	
36733 1455	- RANGE FRONT LIGHT 4	38-57-07.762N 074-52-35.156W	Q R	13		Light 4 TR-TY on multi-pile structure. On same structure as Cape May Harbor Range Front light.	Lighted throughout 24 hours. Visible all around higher intensity 0.5° either side of rangeline.
36735	- LIGHT 6	38-57-07.369N 074-52-50.366W	FI R 4s	15	3	TR-TY on pile.	
36740	- LIGHT 7	38-57-03.307N 074-52-56.606W	FI G 4s	15	4	SG-SY on pile.	
36743	- Day beacon 7A	38-57-00.166N 074-53-18.351W				SG-SY on pile.	
36745	- LIGHT 8	38-57-03.834N 074-53-18.563W	FI R 6s	15	4	TR-TY on pile.	
36750	- Day beacon 10	38-57-02.157N 074-53-28.102W				TR-TY on pile.	
36755	- Day beacon 12	38-57-00.236N 074-53-36.287W				TR-TY on pile.	
36760	- Day beacon 13	38-56-56.436N 074-53-42.725W				SG-SY on pile.	
36765	- LIGHT 14	38-56-58.009N 074-53-52.459W	FI R 4s	15	4	TR-TY on pile.	

(1) No.	(2) Name and Location	(3) Position	(4) Characteristic	(5) Height	(6) Range	(7) Structure	(8) Remarks
INTRACOASTAL WATERWAY (New Jersey) - Fifth District							
LITTLE EGG HARBOR TO CAPE MAY (Chart 12316)							
Atlantic City - Cape May							
Cape May Harbor							
36770	Schellenger Landing Day beacon 1	38-56-55.388N 074-54-05.134W				SG on pile.	
36775	Schellenger Landing Day beacon 2	38-56-55.617N 074-54-05.716W				TR on pile.	
Cape May Village							
36777	- Day beacon 1	38-56-52.300N 074-54-09.200W				SG on pile.	Private aid.
36777.1	- Day beacon 2	38-56-51.300N 074-54-06.600W				TR on pile.	Private aid.
36777.2	- Day beacon 3	38-56-50.300N 074-54-08.100W				SG on pile.	Private aid.
36777.3	- Day beacon 4	38-56-48.500N 074-54-08.100W				TR on pile.	Private aid.
36777.4	- Day beacon 5	38-56-47.200N 074-54-11.400W				SG on pile.	Private aid.
36777.5	- Day beacon 6	38-55-45.300N 074-54-11.400W				TR on pile.	Private aid.
Cape May Canal East Entrance							
36780	CAPE MAY CANAL EAST END ENTRANCE LIGHT 16	38-57-07.864N 074-54-08.380W	FI R 4s	12	4	TR on pile.	
36782	RUTGERS AQUACULT PUMP STATION LIGHT 16	38-58-01.935N 074-56-33.604W	Q R	10		TR on pile.	Private aid.
36782.1	RUTGERS AQUACULT PUMP STATION LIGHT 18	38-58-01.934N 074-56-34.061W	Q R	10		TR on pile.	Private aid.
36782.2	RUTGERS AQUACULT PUMP STATION WARNING LIGHT	38-58-02.464N 074-56-33.828W	FI W 4s	10		NB on pile worded PIPELINE.	Private aid.
Cape May Canal West Entrance							
36785 1670	CAPE MAY CANAL WEST ENTRANCE SOUTH JETTY LIGHT 10	38-57-57.549N 074-58-02.421W	FI R 4s	30	6	TR-SY on skeleton tower.	
36790 1675	- NORTH JETTY LIGHT 11	38-58-03.684N 074-57-59.690W	FI G 2.5s	34	6	SG-TY on skeleton tower.	HORN: 1 blast ev 15s (2s bl). HORN is activated by keying the mic 5 times on VHF-FM 83A (157.175MHz). HORN operates for 30 minutes.

INTRACOASTAL WATERWAY (Virginia) - Fifth District

NORFOLK TO ABLEMARLE SOUND (Chart 12206)							
Elizabeth River Southern Branch							
36805 9955	- LIGHT 2 105 feet outside channel limit.	36-47-38.515N 076-17-50.026W	FI R 2.5s	15	4	TR-TY on pile.	
36810 9960	- Buoy 3 75 feet outside channel limit.	36-47-32.233N 076-17-52.686W				Green can with yellow square.	
36815 9965	- Buoy 5 75 feet outside channel limit.	36-47-27.730N 076-18-01.457W				Green can with yellow square.	
36820 9970	- Day beacon 6	36-47-32.460N 076-18-07.368W				TR-TY on pile.	
36825 9975	- LIGHT 8 75 feet outside channel limit.	36-47-27.837N 076-18-12.180W	Q R	18	4	TR-TY on pile.	
36830 9980	- LIGHT 9 75 feet outside channel limit.	36-47-17.064N 076-18-07.048W	FI G 2.5s	15	3	SG-SY on pile.	
36835 9985	- Buoy 10	36-47-14.403N 076-18-12.616W				Red nun with yellow triangle.	
36840 9990	- Buoy 12	36-47-07.324N 076-18-15.746W				Red nun with yellow triangle.	
36845 9995	- Buoy 14	36-47-02.534N 076-18-19.686W				Red nun with yellow triangle.	